

RACF

Strickler Hess Building Downtown Apartments

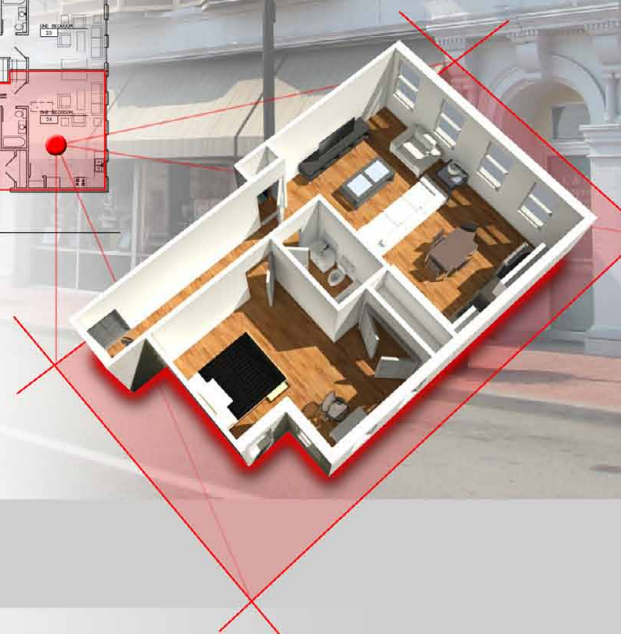
The Strickler Hess Building, Downtown Apartments in Uniontown Pennsylvania is part of an ongoing effort by the Redevelopment Authority of the County of Fayette (RACF) to strengthen and revitalize local communities. Developing the Strickler Hess Building in downtown Uniontown will not only help by renovating a historically significant building, it will also address a growing need for housing driven largely by the natural gas industry.



SECOND FLOOR PLAN



THIRD FLOOR PLAN



Each apartment is between 350 to 560 square feet and will include a Living Room, a Kitchen/Dining Room, a Bedroom and a Bathroom. The Kitchen/Dining area is kept open to the Living Room creating a more flexible and livable apartment. The Living Room, Kitchen/Dining Room, and Bedroom will have hardwood floors and the bathrooms will have tile floors. The goal of the project is to provide affordable, good quality apartments while helping to revitalize downtown Uniontown.